



ARTSFUND 



2020 ANNUAL REPORT



TABLE OF CONTENTS

03 A Report to the Community

05 Timeline

07 Grant Making

11 Covid Response

13 Stories from 2020

17 Financials

19 2020 Donors

22 Credits



BOARD OF TRUSTEES

For updated lists, please visit artsfund.org/leadership/boards

OFFICERS

ANTHONY R. MILES | CHAIR
Partner
Stoel Rives LLP

SUNG YANG | CHAIR-ELECT
Principal
Pacific Public Affairs

ERIN HOBSON | VICE CHAIR
Vice President,
Director of Marketing &
Communications
Sellen Construction

STEPHAN COONROD |
SECRETARY
Partner
K&L Gates LLP

RODNEY K. FUJITA* |
TREASURER
Principal
Bader Martin, P.S.

CAROL R. POWELL* |
IMMEDIATE PAST CHAIR
Senior Vice President
Wells Fargo, The Private Bank

MICHAEL R. GREER |
PRESIDENT & CEO

BOARD MEMBERS

KUMI YAMAMOTO BARUFFI
Executive Vice President &
General Counsel
Columbia Bank

CARL G. BEHNKE
President
REB Enterprises

MICHAEL P. BENTLEY
Partner
Ernst & Young LLP

KAREN BERGIN
Senior Director of Employee
Engagement
Microsoft

AARON BLANK
CEO & President, Partner
The Fearery Group

SHAVONDELIA BROWN
Director, Managing Corporate
Counsel
Starbucks Coffee Company

PETE DAPPER
Creative Director
Dapper + Associates

JAMES R. DUNCAN*
Chairman & CEO (retired)
Sparling, Inc.

PATRICK EVANS
President & CEO
Sound

KEVIN P. FOX
Senior Vice President (retired)
Bank of America
Private Wealth Management

JACKIE JONES**
Deputy Director, Gender
Equality
Bill & Melinda Gates
Foundation

CHRISTOPHER M. KOA
Corporate Counsel
Costco Wholesale

M. THOMAS KROON
Chairman & CEO
Thomas James International,
LLC

TOM LEONIDAS**
President & CEO
Wood Harbinger, Inc.

DANA LORENZE
Senior Vice President, Global
Customs
Expeditors International of
Washington

ELIZABETH MACPHERSON
Partner
Mithun

RACHEL MCCALL
Vice-President & Assistant
General Counsel
Weyerhaeuser Company

SANDY D. MCDADE
Senior Vice President & General
Counsel (retired)
Weyerhaeuser Company

SHAWNTE M. MITCHELL
Senior Vice President, General
Counsel & Corporate Affairs
Aptevo Therapeutics Inc.

MARY PIGOTT

BILL PREDMORE
Chief Executive Officer and
Minority Owner
OL Reign
Founder & Board Member
POP

STEPHEN P. REYNOLDS
CEO (retired)
Puget Sound Energy
Managing Director
PreferWest LLC

JIM ROSE
President & General Manager
KING 5 Media Group

CINDY SNYDER
Vice President of Network
Strategy
Delta Dental of Washington

STANLEY D. SAVAGE*
Chairman
The Commerce Bank

NINA TESSIORE
Senior Vice President & Private
Client Advisor
Bank of America Private Bank

LINDA WALTON
Partner
Perkins Coie LLP

*term ended November 11,
2020
**term began November 11,
2020

FOUNDATION BOARD

JAMES F. TUNE | CHAIR
SANDY MCDADE | VICE CHAIR
JUDI BECK | SECRETARY
DAVID BUCK
RODNEY K. FUJITA
JOSHUA GREEN III
STEPHEN REYNOLDS
MARY PIGOTT
STANLEY D. SAVAGE
MICHAEL GREER, *ex officio*

ADVISORY COUNCIL

JOHN H. BAUER
ALLAN AND NORA DAVIS
DR. DAVID R. DAVIS
PETER DAVIS
JAMES R. DUNCAN
PETER A. HORVITZ
DEBBIE KILLINGER
KENNETH M. KIRKPATRICK
CHARLOTTE R. LIN
HOWARD LINCOLN
JAMES D. RAISBECK
ANN RAMSAY-JENKINS
FREDERICK B. RIVERA
FAYE SARKOWSKY
STANLEY D. SAVAGE
DAVID SKINNER
MARY SNAPP
JAMES F. TUNE
CHARLES B. WRIGHT III
ANN P. WYCKOFF

A REPORT TO THE COMMUNITY

Our 50th Anniversary was planned to be a milestone year, but none could have anticipated the magnitude of change that was 2020. A global pandemic, social unrest, economic upheaval, and a long overdue national focus on addressing racial injustice upended not only our sector, but also our nation.

Under Board Chair Anthony Miles and Interim President and CEO Susan M. Coliton, and with the support of ArtsFund Foundation then led by Jim Tune, ArtsFund responded decisively to the initial shock of COVID-19 by raising and granting over \$3.1 million dollars in funding in addition to accelerating our annual distributions; culminating in over \$5.5 million in relief funding to 113 local arts and cultural organizations. As the sector closed its doors in solidarity with other businesses to support necessary public-health mandates, ArtsFund mobilized our network to gather data, raise funds, and advocate for the arts.

2020 produced devastating losses and unforeseeable challenges for our cultural sector. It also highlighted our resilience and creativity. And while ArtsFund's core mission remains the same—to provide grantmaking, advocacy, and leadership, we have recommitted ourselves to ensure cultural programs and experiences are accessible and representative of all in our community. That is why we embarked now to develop an ambitious new strategic plan, that drew feedback from hundreds of community conversations, so that we can reimagine our shared work with our partners, to build a more sustainable, equitable, and accessible post-pandemic cultural sector.

We cannot do this alone.

It is the support of our stakeholders, like you, that makes this possible. Thank you for joining us in creating a more healthy, inclusive, and creative Washington not only for today, but for generations to come.



MICHAEL R. GREER
President & CEO
ArtsFund



ANTHONY R. MILES
Partner
Steel Rives LLP
Chair, ArtsFund*
Board of Trustees



SUNG YANG
Principal
Pacific Public Affairs
*Chair-Elect**, ArtsFund*
Board of Trustees

**Board Chair term ended November 11, 2020 **Board Chair term began November 11, 2020*

**LEADERSHIP,
ADVOCACY,
GRANTMAKING**



2019-2020 TIMELINE

OCT
2019

SEPT
2020



OCTOBER 2019

Under the leadership of Interim CEO Susan M. Coliton, kicked off 50th Anniversary year with ArtsFund Day in Seattle proclaimed by Mayor Jenny Durkan

DECEMBER 2019

\$40,000 in Multicultural Arts Project grants distributed to 8 organizations

FEBRUARY 2019

Hosted an Open House attended by over 120 donors and partners

MARCH 2020

First COVID-19 shutdowns announced*

COVID-19 Arts Emergency Relief Fund launched

**See pages 11-12 for additional information on ArtsFund's COVID-19 response*

APRIL 2020

Initial COVID-19 impact snapshot released compiling data from 85 arts and cultural nonprofits

MAY 2020

Distributed \$4.8 million in COVID-19 Relief Grants and annual Allocations Grants

JUNE 2020

Michael Greer assumes leadership as President & CEO

JULY 2020

Distributed an additional \$500,000 in COVID-19 Relief Grants

AUGUST 2020

Received input from 43 network members during our Cultural Partners listening sessions

SEPTEMBER 2020

Celebrated the resilience of our arts sector with over 540 community members during the Digital Celebration of the Arts

Distributed \$100,000 in 50th Anniversary Grants

Wrapped our anniversary year with ArtsFund Day in King County proclaimed by King County Executive Dow Constantine

GRANT MAKING

For updated lists, please visit
artsfund.org/grantprocess

→ ANNUAL ALLOCATIONS GRANTS

ArtsFund distributes grants in several ways, including our keystone general operating support program. Recipients can use ArtsFund's general operating support grants to provide programming and arts education, reduce barriers to arts participation, increase access and opportunity for underserved youth, and for staffing, capacity-building, professional development, and facilities. This unrestricted funding enables grant recipients to invest the funds where most needed to advance their missions.

→ COVID-19 ARTS EMERGENCY RELIEF GRANTS

ArtsFund, along with a coalition of anchor arts and cultural organizations, created the COVID-19 Arts Emergency Relief Fund to help stabilize the sector with unrestricted grants for arts organizations impacted by the global pandemic. The ArtsFund Foundation seeded the fund with \$1 million and additional gifts and from donors pushed the total to \$3.2 million.

→ MULTICULTURAL ARTS PROJECT GRANTS

ArtsFund's Multicultural Arts Project supports culturally, ethnically, and racially diverse arts and cultural groups throughout the Central Puget Sound Region. 2020 grant recipients used funds for programs connecting communities, creating broader access to the arts, paying artists, and general operating support.

→ YOUTH ARTS OPPORTUNITY FUND GRANTS

The Youth Arts Opportunity Fund supports programs and organizations that provide meaningful arts engagement opportunities for our region's young people who are too often overlooked and denied equitable opportunities, particularly at-risk students and youth from low-income backgrounds.

→ 50TH ANNIVERSARY GRANTS

In celebration of our 50th anniversary year, ArtsFund allocated \$100,000 in grants to five regional arts and cultural nonprofits. These \$20,000 unrestricted grants were awarded in recognition of regional arts organizations' demonstrated and future impacts advancing ArtsFund's mission of strengthening community through the arts.

→ CREATIVE EQUITY FUND

In 2020, ArtsFund, continued to contribute funds and staff support to the Creative Equity Fund. Creative Equity supports nonprofit organizations using arts and culture based strategies to build racial justice. The program is administered by Seattle Foundation and was developed initially through collaboration with ArtsFund and other funders.

TOTAL 2020 ARTSFUND GRANTS:

\$5.5 MILLION

TOTAL ARTSFUND GRANTS SINCE 1969:

\$89.5 MILLION

2020

ARTSFUND GRANTEES

For a complete list of ArtsFund's 130+ Cultural Partners, visit artsfund.org/CulturalPartners

The 5th Avenue Theatre
ACT Theatre
American Asian Performing Arts Theatre
Art with Heart
Artist Trust
Arts Corps
ArtsWest Playhouse & Gallery
Asia Pacific Cultural Center
Auburn Symphony Orchestra
Bellevue Arts Museum
Book-It Repertory Theatre
Burke Museum Association
The Central District Forum for Arts & Ideas
Chamber Music Madness
Chinese Arts and Music Association
Coyote Central
Deaf Spotlight
Densho
Diverse Harmony
Early Music Seattle
Earshot Jazz
Edmonds Center for the Arts
Edmonds Driftwood Players
El Centro De La Raza
Emerald City Music
The Esoterics
Federal Way Symphony Orchestra
Freehold Theatre Lab / Studio
Friends of KEXP
Frye Art Museum
Gage Academy of Art
The Grand Cinema

Henry Art Gallery
Hilltop Artists
Hugo House
Intiman Theatre
Jack Straw Cultural Center
Japan Arts Connection Lab
Jet City Improv
Khambatta Dance Company
Kirkland Arts Center
Kirkland Performance Center
Lakewood Playhouse
LANGSTON
Meany Center for the Performing Arts
MoPOP
Museum of Glass
Museum of History & Industry
Music Center of the Northwest
Music Works Northwest
National Nordic Museum
Northwest African American Museum
Northwest Film Forum
Northwest Folklife
Northwest Puppet Center
Northwest Sinfonietta
Northwest Tap Connection
On the Boards
Pacific MusicWorks
Pacific Northwest Ballet
Path with Art
Photographic Center Northwest
Pratidhwani
Pratt Fine Arts Center
Red Eagle Soaring
Schack Art Center
Seattle Art Museum
Seattle Arts & Lectures

Seattle Asian American Film Festival
Seattle Center Festal
Seattle Chamber Music Society
Seattle Children's Theatre
Seattle Chinese Chorus
Seattle Choral Company
Seattle JazzED
Seattle Latino Film Festival
Seattle Men's Chorus and Seattle Women's Chorus
Seattle Music Partners
Seattle Opera
Seattle Pro Musica
Seattle Public Theater
Seattle Rep
Seattle Repertory Jazz Orchestra
Seattle Shakespeare Company
Seattle Symphony
Seattle Theatre Group
Seattle Youth Symphony Orchestra
Shoreline-Lake Forest Park Arts Council
SIFF
SIS Productions
Snohomish County Music Project

Spectrum Dance Theater
Symphony Tacoma
Tacoma Art Museum
Tacoma Arts Live
Tacoma Musical Playhouse
Tacoma Opera
Tacoma Urban Performing Arts Center
Tacoma Youth Symphony Association, Inc.
Taproot Theatre Company
Tasveer
Ted Brown Music Outreach
TeenTix
Three Dollar Bill Cinema
Totem Star
Town Hall Seattle
Unexpected Productions
Vashon Center for the Arts
Velocity Dance Center
The Vera Project
Village Theatre
Wa Na Wari
Whim W' Him
Wing Luke Museum of the Asian Pacific American Experience
Youth in Focus



COVID RESPONSE

To learn more, please visit
artsfund.org/covid-19-resources

The COVID-19 global pandemic heavily impacted ArtsFund's work in 2020. In mid-March, under the leadership of Interim President & CEO Susan M. Coliton, we launched an ongoing and multifaceted response effort to support arts and cultural organizations throughout the region. This effort, which initially focused in three main areas, has continued to evolve along with the pandemic and its impacts.

→ COVID-19 ARTS EMERGENCY RELIEF FUND

A coalition of anchor arts organizations led by ArtsFund launched a fund to help stabilize the sector with relief grants for arts organizations impacted by COVID-19. Through the fund, ArtsFund allocated \$3.2 million in COVID-19 Arts Emergency Relief grant awards to 106 organizations throughout the Central Puget Sound Region.

→ DATA COLLECTION: ARTS SECTOR IMPACTS

In collaboration with our regional grant making partners, ArtsFund conducted ongoing impact surveys to better understand the immediate and projected impacts of COVID-19 on the arts and cultural sector. These surveys resulted in quarterly impact snapshots which were covered by local, regional, and national news outlets, and helped inform relief work across the state.

→ PARTNERSHIPS & RESOURCE CONSOLIDATION

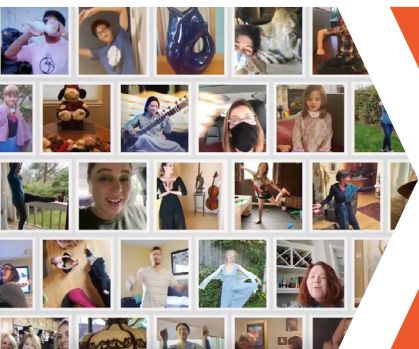
ArtsFund remained in close communication with other arts funding and support agencies across our region to share information and consolidate efforts to maximize our collective impact. In addition to posting resources for arts organizations on our website and providing frequent updates to our cultural partners, we hosted a live digital news event in May to help raise awareness of how the pandemic affected the cultural sector and how community members could help.

70% OF DONORS

TO THE ARTS EMERGENCY RELIEF FUND WERE
NEW TO ARTSFUND.

100% OF FUNDS RAISED

FOR THE ARTS EMERGENCY RELIEF FUND
WERE ALLOCATED IN RELIEF GRANTS.



"This is the biggest relief grant we have received thus far, and **it will make a remarkable difference** for us from any angle: morale, finances, staff retention. Thank you ArtsFund for all you do for the community and the arts."

Arts Emergency Relief Fund Grant Recipient

STORIES FROM 2020

ArtsFund 50th Anniversary Day

in King County. I encourage all residents to join me in recognizing the critical work of ArtsFund over the past 50 years.



Dow Constantine
Dow Constantine
King County Executive



➔ DIGITAL CELEBRATION OF THE ARTS

In September, ArtsFund offered a new twist on a longstanding tradition with our first Digital Celebration of the Arts event. Six months into the COVID-19 pandemic shutdowns, the Digital Celebration provided a much-needed space for arts and cultural workers, donors, advocates, and volunteers to come together and collectively experience powerful artistic performances, engage in dialogue, and raise funds for the cultural community.

“Thank you ArtsFund! A joyous and much needed reminder of **how the arts are necessary and nourish the soul!**”

“This event has given me **a renewed hope** that we will get out on the other side stronger, better, and ready for anything else coming our way! Amazing program ArtsFund!”

Digital Celebration of the Arts Attendees

“I do not consider us lucky to count ArtsFund among the true believers in Town Hall, **I consider Seattle lucky to have an institution like ArtsFund** that believes in what we are all capable of, together. And for the support, encouragement, and accountability devoted to the invigorating cultural life Seattle has always deserved....For 50 years now, we have all been lucky that ArtsFund believes in all of us.”

WIER HARMAN, Executive Director, Town Hall Seattle

STORIES FROM 2020

→ CULTURAL PARTNER LISTENING SESSIONS

As we onboarded our new President & CEO, Michael Greer, we centered input from some of our key stakeholders—the arts and cultural organizations we serve. Over the summer, Michael and ArtsFund staff held three virtual meetings for members of ArtsFund’s Cultural Partners Network to learn about their current priorities, concerns, and visions for the future. These were complemented by dozens of one meetings with partners during his first three months.

→ FORAYS INTO DIGITAL PROGRAMMING

ArtsFund made several digital advances to maintain connections with the organizations we serve as well and our supporters over the course of the year.

“The faculty did an amazing job adapting to the change in format. **They kept lectures interesting and did a wonderful job engaging the class.** Thank you!”

Spring 2020 Board Leadership Training participant

→ ACCELERATED GRANT MAKING

In addition to the Arts Emergency Relief Fund, ArtsFund expedited the grant making process for our annual keystone sustaining grants to get funding in the hands of our Cultural Partners as quickly as possible during the crisis.

“The stability and generosity of ArtsFund’s support makes it possible for us to focus on our programs and output—**making a difference in the life of our community** and our field through art.”

ArtsFund Grant Recipient

43 CULTURAL PARTNERS

REPRESENTING 35 UNIQUE ORGANIZATIONS
ATTENDED LISTENING SESSIONS WITH
MICHAEL GREER.



FINANCIALS

For audited financials, please visit
artsfund.org/audited-financial-statements

CONSOLIDATED STATEMENT OF ACTIVITIES

FOR THE 12 MONTH PERIOD ENDED 09.30.2020

Contributions to ArtsFund Foundation	22,405
Contributions and pledges	4,528,992
Net realized and unrealized gain on investments	1,555,641
Other income	63,122
Donated services (in-kind)	122,178

TOTAL SUPPORT & REVENUES OTHER THAN SPECIAL EVENTS \$ 6,292,338

Special event, net 216,294 |

Grants to beneficiaries	5,527,500
Program services	686,319
Management and general	604,523
Fundraising	434,878

TOTAL GRANTS & EXPENSES \$ 7,253,220

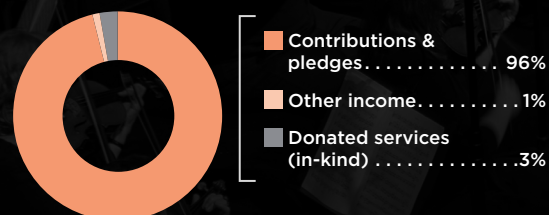
Century Building net rental income	31,070
Non-operating net income (fiscal agent)	(34,260)
Gain on sale of Century Building, net	8,199,767

TOTAL NON-OPERATING REVENUE & EXPENSES \$ 8,196,577

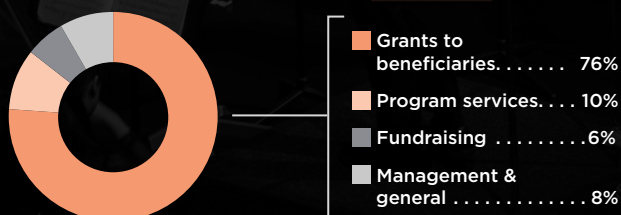
Change in net assets 7,451,989 |

*see detail in graph breakout

SUPPORT & REVENUE



EXPENSES



CONSOLIDATED BALANCE SHEET

AS OF 09.30.2020

ASSETS

CURRENT ASSETS

ArtsFund cash and cash equivalents	4,875,709*
ArtsFund Foundation cash & investments	27,808,362*
Pledges receivable, net	182,060
Prepaid expenses and other	37,190

TOTAL CURRENT ASSETS \$ 32,903,321

NON-CURRENT ASSETS

Equipment and website	540,389
Accumulated depreciation	(421,621)

TOTAL ASSETS \$ 33,022,089

LIABILITIES & NET ASSETS

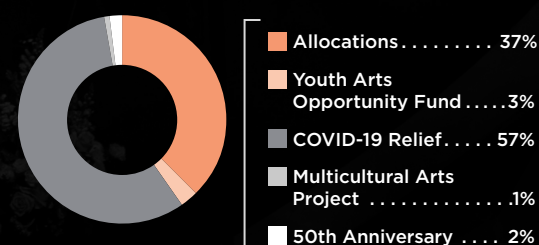
PPP loan payable	149,090
Accounts payable & other accrued liabilities	22,314

NET ASSETS \$ 32,850,685*

TOTAL LIABILITIES & NET ASSETS \$ 33,022,089

*includes cash proceeds of \$9.7M from the sale of
Century Building

GRANTS TO BENEFICIARIES



2020 DONORS

Thank you for making ArtsFund's work possible!
For a complete donor list, please visit
artsfund.org/2020Donors

Corporate & Foundation Donors

\$350,000 and up



\$100,000-\$349,999



\$50,000-\$99,999



\$25,000-\$49,999



Delta Dental of Washington



\$10,000-\$24,999

Classical KING FM 98.1*
Columbia Bank
Dapper + Associates*
Davis Wright Tremaine LLP
The Dorsey & Whitney
Foundation
Nordstrom, Inc.
RealNetworks Foundation
Seattle Center*
Sequoia Foundation
Stoel Rives LLP
TEW Foundation
Tinte Cellars
Union Bank
West Monroe Partners

\$5,000-\$9,999

Bill & Melinda Gates Foundation
The Commerce Bank of
Washington
Ernst & Young LLP
The Fearey Group*
Fox Rothschild LLP
The Hugh and Jane Ferguson
Foundation
Loeb Family Charitable
Foundation
Mithun
Safeco Insurance
Seattle Office of Arts & Culture
\$2,500-\$4,999
Cheyette & Associates*
Goldman, Sachs & Co.
K&L Gates
LMN Architects

Pacifica Law Group
Seattle Foundation
Wright, Runstad & Company

\$1,000-\$2,499

ACT Theatre
The Barnard Charitable Fund
Chihuly Garden and Glass
The 5th Avenue Theatre
Franklin Weinberg Fund
Frye Art Museum
Garden Tapestry*
Ishii & Associates, LLC*
LMN Architects
MoPOP
NHL Seattle
Pacific Northwest Ballet*
REB Enterprises
Schoenfeld-Gardner Foundation
Seattle Metropolitan Chamber of
Commerce

Seattle Opera
Seattle Theatre Group
Sound
SRG Partnership
Tacoma Art Museum
Taylor-Thomason Insurance
Vulcan Inc.
Washington Research Foundation
Westlake Consulting Group
Whim W'Him

Individual & Foundation Donors ARTS BENEFACTOR CIRCLE DONORS

DIAMOND CLUB
\$50,000 and up

Katharyn A. Gerlich
Mary Pigott
Pete and Julie Rose

GOLD CLUB
\$25,000-\$49,999

Allan and Nora Davis
Ellen Ferguson
John Graham Foundation
Peter and Margaret Horvitz
Lawrence and Mary Ellen
Hughes
Moccasin Lake Foundation
Stephen and Paula Reynolds
Mary Snapp and Spencer Frazer

CONDUCTOR'S
CIRCLE
\$10,000-\$24,999

The Nancy D. Alvord Fund
Judi Beck and Tom Alberg
Steve Behnen and Mary Hornsby
Carl and Renee Behnke
Stephan Coonrod and Cheryl
Clark
Glenn H. Kawasaki Foundation
Debbie Killingler
M. Thomas and Gwen Kroon
Charlotte Lin and Robert Porter
Sandy McDade
Anthony and Erica Miles
Neukom Family
Judy Pigott
Herman and Faye Sarkowsky
Charitable Foundation
Theilene Scheumann
Kathy Surace-Smith and Brad
Smith
James and Katherine Tune
Ann P. Wyckoff

FIRST CHAIR
\$5,000-\$9,999

Nancy Hill Bain
Michael and Anne Bentley
Brad and Carla Berg
Kent and Sandra Carlson
David H. Corry
David R. Davis
Idalice Dickinson
James and Gaylee Duncan
Janelle and Peter Durham
Jane Fields
James Fowler and Elisabeth
Beaber
Kevin and Lynne Fox
William Franklin
Allen and Carol Gown
Lynn and Brian Grant Family
The Lenore Hanauer Foundation
Lynn Hubbard and David
Zapolsky
Karen L. Koon
Dana and Roger Lorenze
Lowen Family Foundation
Maria Mackey
Lisa McGimpsey
Alexandra Mertens**
Jocelyn Phillips and Warren
Bakken
Carol and Doug Powell
Bill and Teresa Predmore
Herbert and Lucy Pruzan
Ann Ramsay-Jenkins and the
William M. Jenkins Fund
John Teutsch and Mary Foster
Maggie Walker
Arlene A. Wright*

ENCORE
\$2,500-\$4,999

Robert Achilles and Brian Smith
Daniel Alexander
Kim Anderson and Andrew
Bentley
Bob W. Ash*
Kumi Yamamoto Baruffi and
Anthony Baruffi
Susan Brotman
Patrick Evans and Joe Gilmer
John Gleason
Richard and Marilyn Herzberg
Erin and Richard Hobson**
Dan and Connie Hungate
Bruce E.H. Johnson
Jacqueline Jones and Tyler
Woebkenberg**
Barbara and Michael Malone
Family Fund
Rachel and Doug McCall
Yazmin Mehdi and Liam Lavery
Kristine and Mark Mitchke
Brian and Phoebe Paulen

Leigh and Louise Rabel
Foundation*
Jim Rose and Eric Gutierrez
Keith Schreiber and Clare Kapitan
Cindy and Gary Snyder
Elaine Spencer and Dennis
Forsyth
Linda Walton and Andrew Hoyal
Kristine and Patrick Wilson
Leslie and Tachi Yamada
Sung Yang and SoYoung Kwon

SPOTLIGHT
\$1,000-\$2,499

Shawn and Lynne Aebi
David and Gay Allais
Lindsay Anderson and Janet
Piehl
Armstrong Family**
Tim Beaver
Ronald Berenstein
Leslie Ray Bernstein and
Michael Bernstein
William and Margaret Beyers
Aaron Blank and Lacey Yantis**
Andrea Bolliger
Jean and Rob Bowman
Michael Breedon**
Meagan Briggs**
Shavondelia Brown
Alan and Ashley Bruggeman
Elizabeth Choy
Theodore and Patricia Collins
Donald and Barbara Coyner
Dave and Kathryn Daggett
James Degel and Jeanne
Berwick
Mayur Deshpande and
Sayantani Mukherjee**
Sara Dickerman and Andrew
Shuman
Patrick and Marlene Dineen
Karl Ege
Rebecca Engrav and Joon-Ho Yu
Jon Fine and Paula Selis
Kathryn and David Fleischer
Susan Foster
Mark Fox
Christina Fraser
Sarah Friedman and Michael Burg
Rod Fujita
Mimi and William* H. Gates
Dwight Gee and Barbara Wright*
Dirk Giseburt and Marilyn Stahl
Karen Glover and Thad Alston
Claire and Paul Grace
Lynne Graybeal and Scott Harron
Bert Gregory
Richard and Elizabeth Hedreen
Steven and Sandra Hill
Bret Hillman
Derek Hilton
Suzanne Hittmann

Aaron Jordan
Kenneth and SaSa Kirkpatrick
Amanda Leifheit**
Scott and Nancy MacCormack
Elizabeth MacPherson
Blanche and Stephen Maxwell
Pamela Mayer
Kathy Felton McCauley
N. Elizabeth McCaw*
Virgil McDonald
Rick and Karen McMichael
Jamie and Troy Miller**
Shawnte Mitchell and Eric Johnson
Mike and Beate Myers
Erika Nesholm
Chris Neuss
Charles and Eleanor Nolan
Lisa and Keith Oratz
Kathleen O'Sullivan and Baird Johnson
Patricia Pearson and Declan O'Neill**
Sachin Premasuthan
Rabel Family Designated Fund
William Rava
Anne Redman
Scott and Shawn Redman
Natalie and Derek Robbecke
Mike Ryberg
Mary-Catherine Schugel**
Mike Short
Barry Sidman*
John Sims and Trish Espedal
Robert and Barbara Spindel
Bonnie and Alan Steele
Charles and Delphine Stevens
Kent Stowell and Francia Russell
Nancy and Mark Stratton
Cynthia Stroum
Maryanne Tagney
David Tarshes and Deborah Kerdeman
Nina Tessiere
Amy Theobald and Cara Beth Lee
Betty Lou Treiger
Case van Rij
Clyde and Sherrelle Walker
Thomas and Connie Walsh
Nancy Ward and Toby Bright
Steven Wayne
Ann and Richard Weiner
Karen Whitney
Josh Williams and Lakshmi Muirhead
Mary Newcomer Williams and Fred William
Christina Wright
Virginia B. Wright*
The Wyatt-Stone Family
Margery Ziff
Anonymous, in memory of Marie Ricketts

Support from Microsoft Corporation, Perkins Coie, Sellen Construction, The Boeing Company, KING 5 Television, Davis Wright Tremaine LLP, and Bill & Melinda Gates Foundation includes employee workplace giving.

**Denotes a portion of the gift came from in-kind donations.*

***Denotes members of the ArtsFund Visionaries.*

**In memoriam.*

COVID-19 Arts Emergency Relief Fund Donors

For a complete donor list, please visit artsfund.org/covid-19-relief-fund.

Thank you to our generous partners who supported the arts and cultural community through the COVID-19 Arts Emergency Relief Fund.

\$100,000 and up

Anonymous Fund of the Philadelphia Foundation
ArtsFund Foundation
Carl and Renee Behnke
Friday Foundation
Joshua Green Foundation
Microsoft Corporation
Paul G. Allen Family Foundation
Mary Pigott
WarnerMedia

\$50,000-99,999

The Barton Family Fund
The Hilton Family Fund
Peter and Peggy Horvitz
Norcliffe Foundation
Pivotal Ventures
The Sahsen Fund
Cynthia Stroum

\$10,000-\$49,999

Anonymous STG Board member
Judi Beck and Tom A. Alberg
Glenn H. Kawasaki Foundation
The Grousemont Foundation
Max and Helen Gurvich*
Lucy Helm
Lynn Hubbard and David Zapolsky

KING 5 Television / TEGNA Foundation
Martin-Fabert Foundation
Beth McCaw
Mey Share Foundation Inc.
Susan M. Payne
Audrey and David Rostov
Scan|Design Foundation by Inger & Jens Bruun
The WaterWheel Foundation
Anonymous

\$1,000-\$9,999

Julia Becke
The Bernstein Davenport Charitable Giving Fund
Edward and Adele Bolson
Susan M. Coliton
Alison Danz
Jill and Matt Deasy
Jim and Gaylee Duncan
David Enslow
Beth Etscheid
Kevin and Lynne Fox
Sharon Griggins
The Gutierrez Family
Cheryl Houser and Dennis Wackerbarth
Jason Hunkle
Alison Ivey
Carla and Don Lewis
Mary Anne Stusser Martin and Charles Martin
Suzanne McGill
Anna, Rian, and Shane McHugh
Steve Miller and Pam Cowan
Chuck Nordhoff and Maribeth O'Connor
Cheryl and Tom Oliver
Kyle and Michele Peltonen
Carol and Doug Powell
Alan Ruder and Deborah Hyman
Salm Rojo Charitable Fund
Jeff and Martha Sherman
Marcia and Peter Sill
Kahran Singh
Graham Smith and Karen McNeill
Delphine and Charles Stevens
Laura Stusser-McNeill and KC McNeill
David Taft
Case van Rij
Sylvia Wolf and Duane Schuler
Sally and David Wright
Anonymous (6)

CREDITS

STAFF

CLARISSE BENSON
Finance & Operations Coordinator

KATY CORELLA
Programs & Advocacy Coordinator

SARAH FRIEDMAN
Vice President of Development

KATE GLEASON
Engagement Coordinator

MICHAEL GREER
President & CEO

MARK JACOBS
Vice President of Finance & Operations

CHELSEA JUDD
Database Coordinator

ELLEN MILLIGAN
Program Manager & Board Liaison

MIKE MYERS
Annual Giving Manager

RACHEL PORTER
Communications & Project Manager

SARAH SIDMAN
Vice President of Strategic Initiatives & Communications

DESIGN BY



PHOTO CREDITS

Cover Hugo House, Scribes youth writing camps 2019, photo by Doug Manelski; Whim W'Him, XALT Pop-up Appearance, photo by Stefano Altamura; Seattle Opera, *Gallery Onyx Reception*, photo by Sunny Martini; Hugo House, *Word Works* with Gish Jen, photo by Paulette Perhach; Taproot Theatre, Emily Shuel, Daniel Stoltenberg, and Cecelia Frye in *Sportsball*, photo by Tony Beama; Northwest Tap Connection performs "*Black Parade*," image and choreography by Cipher Goings. **Page 1** Frye Art Museum, Installation view of *Rebecca Brewer: Natural Horror*, photo by Jonathan Vanderweilt. **Page 4** Hugo House, *Hugo Literary Series: Behind Closed Doors*, photo by Paulette Perhach; Book-It Repertory Theatre, *Howl's Moving Castle*, photo by Aaron Wheatman; Frye Art Museum, installation view of *Subspontaneous*: Francesca Lohmann and Rob Rhee, February 2020, photo by Jonathan Vanderweilt. **Pages 5-6** Seattle Children's Theatre, SCT Drama School Students, photo by Eva Blanchard Photography, courtesy of SCT; Seattle Rep, *In the Heights*, photo by Nate Watters; ArtsWest, Justin Huertas and Rachel Guyer-Mafune in rehearsal for A Very Merry Kraken Tea Party, courtesy of ArtsWest. **Pages 9-10** The cast of *Dreamgirls*, photo by Mark Kitaoka, courtesy of Village Theater. **Pages 11-12** Seattle Shakespeare Company, clips from The Great Seattle Art Adventure, courtesy of Seattle Shakespeare Company; Northwest Tap Connection performs "*Black Parade*," image and choreography by Cipher Goings. **Pages 13-14** Seattle Symphony musicians perform "*Rings of Fire*" at the Digital Celebration of the Arts, ArtsFund Trustee Karen Bergin emcees the Digital Celebration of the Arts. **Page 16** Seattle Symphony, Simone Porter performs with Seattle Symphony musicians at Benaroya Hall, conducted by Shyeon Sung, photo by James Holt, courtesy of Seattle Symphony; Burke Museum, Grand Opening, chalk art in the new Burke yard, photo by Andrew Waits/Burke Museum; Spectrum Dance Theater, *Occurrence #5*, photo by Marcia Davis. **Pages 17-18** Auburn Symphony Orchestra, *Happy Birthday, Beethoven!*, February 16, 2020, photo courtesy of ASO.



artsfund.org | 206.281.9050

For over 50 years, ArtsFund has been raising funds to strengthen the community by supporting the arts. Since 1969, ArtsFund has awarded \$89.5 million to 240 arts organizations in a wide variety of disciplines and scales throughout King and Pierce Counties. Thanks to the gifts from companies and individuals, in 2020 ArtsFund awarded grants totaling more than \$5.5 million.

ArtsFund is a respected voice and central advocate for the arts on the local, regional, state, and national levels, and leads and partners on a variety of sector-wide initiatives. ArtsFund is committed to helping develop the next generation of community and civic leaders and offers a nonprofit board leadership training course as well as ongoing convenings for the cultural sector.